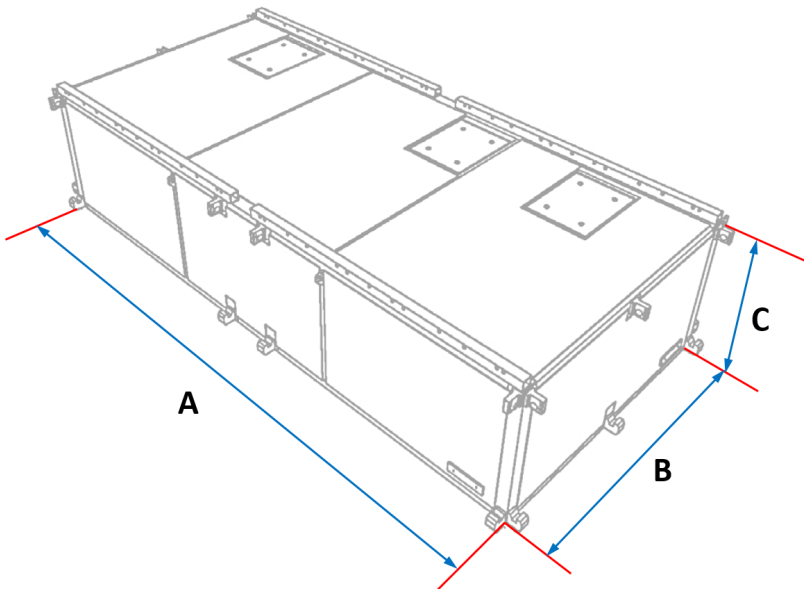
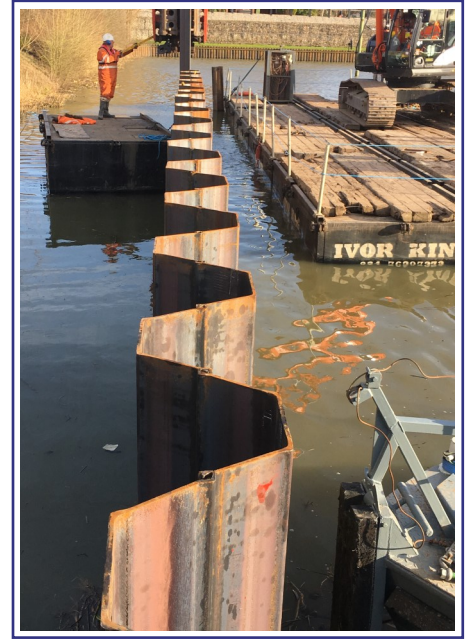


Modular Floating Pontoon System



Technical Data	
Length (A)	5272 mm
Width (B)	2428 mm
Height (C)	1230 mm
Approx Weight	3.5 tonnes (per section)



Our floating pontoons are ideal for survey and repair of bridges, harbour walls, locks, river banks and other hard to reach places, or anywhere a safe working platform walkway, jetty, ramp or slipway is required.

The pontoons are road transportable, capable of supporting a uniformly distributed load of 20kN/m² per float, and can be assembled to create a wide variety of different platforms. Using location lugs and a close tolerance coupling system, present on every side of each pontoon section, our units can be combined to form almost any pontoon shape or configuration.

Pontoons are lifted into the water via use of a crane, then propelled into the working location using our towboats as necessary. 'Spud legs' (metal poles) are forced downwards into the bed of the waterway as a means of anchoring pontoons to prevent general movement and drifting of the floating work platforms.

This versatile modular system can be configured to carry plant such as excavators, MEWPS and piling rigs when used in conjunction with Navi (Bog) Mats. Protective surfaces are also available when painting, shot blasting or sparking from hot work.

All of our piling equipment is available for rental on a short or long term basis. Contact us for a no obligation quote, or if you have any questions about your project, we would be happy to help.